

River Exe season extension  
data  
2003 - 2017

## **SUMMARY AND CONCLUSIONS**

**(Provided in an email from the Environment Agency and quoted below in full)**

“The Environment Agency will not be authorising a further season extension for salmon fishing on the river Exe in October 2018, or considering any further temporary or permanent extensions of the fishing season at this time.

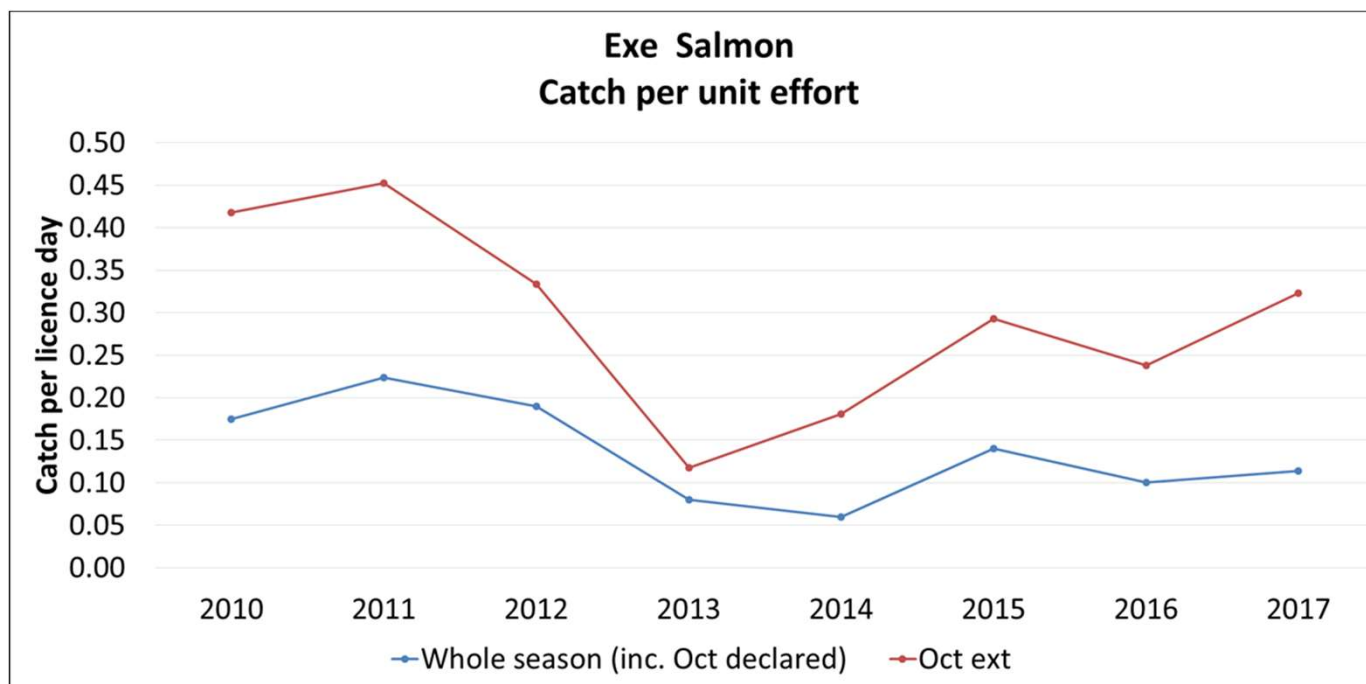
This decision is based on a review of 15 years of data which has been collected in partnership with the River Exe and Tributaries Association. The findings of this review are attached for your information. We have also taken into consideration the current status of salmon stocks on the River Exe, the Salmon five point approach and the new salmon fishing conservation measures we are hoping to introduce next year.

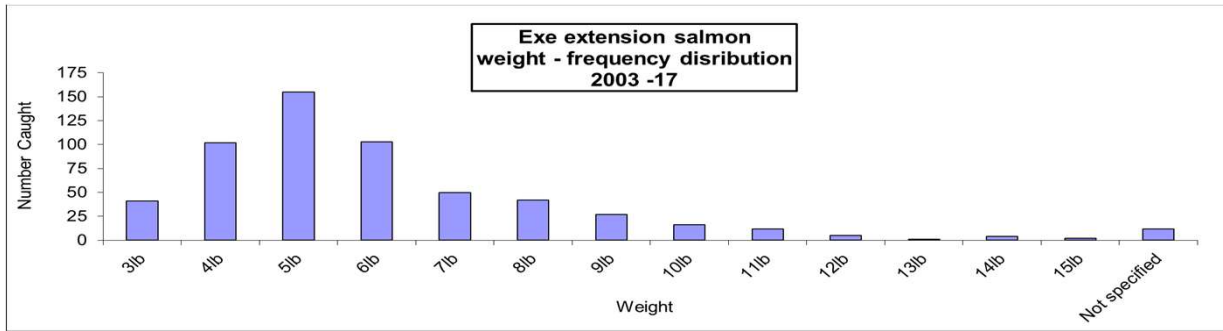
You’ll recall that the original basis of this experiment was to use angler catch return data to gather information on runs of salmon occurring after the end of the regular season, in order to investigate whether there is any justification for change to the current byelaw seasons on those rivers.

One of the key findings which has informed this decision is the high proportion of fish declared as being either coloured or in spawning condition during the 2 week period. (Mean. 58%, 2003-11; 71%, 2012-17). Based on this, there is little evidence to suggest that significant numbers of fresh run fish are available for anglers to catch within the period allowed for the extension in most years. (Body colouration being a reliable external indicator of extended river residence).

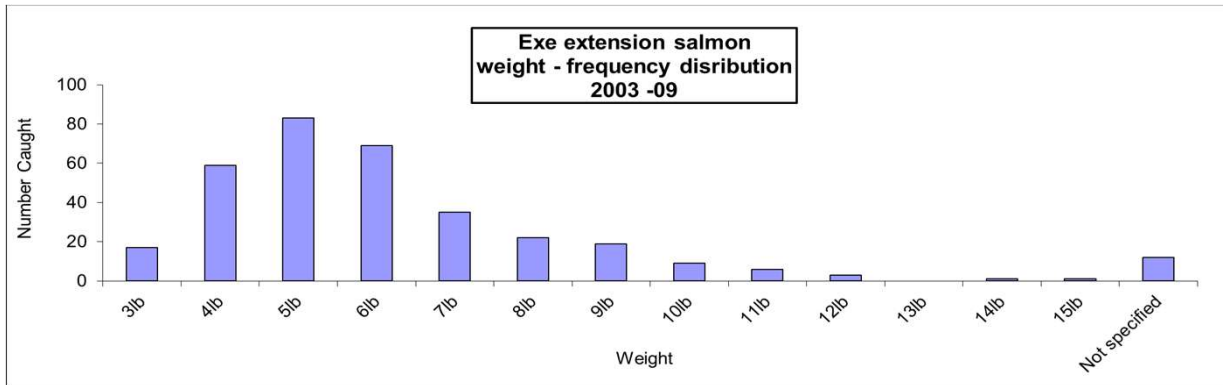
The observed bias of capture location towards the upper-Exe and the River Barle in most years would also support the general notion that the majority of fish caught in October will have been present within the river for some-time, and are less likely to be as a result of a seasonally later run of ‘fresh’ fish entering the river. This is supported further by recent trend data from our salmon index river monitoring work which shows a similar recent decline in overall numbers of 1SW grilse, as well as an observed shift in timing of peak migration for this component to earlier in the season. The high rates of capture of coloured fish which have been reported by some anglers on the River Barle has also been of some specific concern.”

	2003	2004	2005	2006	2007	2008	2009	2010	2011	2012	2013	2014	2015	2016	2017
<b>Anglers fished</b>	17	58	70	65	53	71	45	77	71	47	91	43	23	33	46
<b>Total catch</b>	3	62	75	85	23	72	16	56	57	27	22	15	12	15	31
<b>Days fished</b>	25	120	180	159	93	133	71	134	126	81	187	83	41	63	96
<b>Catch per licence day</b>	0.12	0.52	0.42	0.53	0.25	0.54	0.23	0.42	0.45	0.33	0.12	0.18	0.29	0.24	0.32

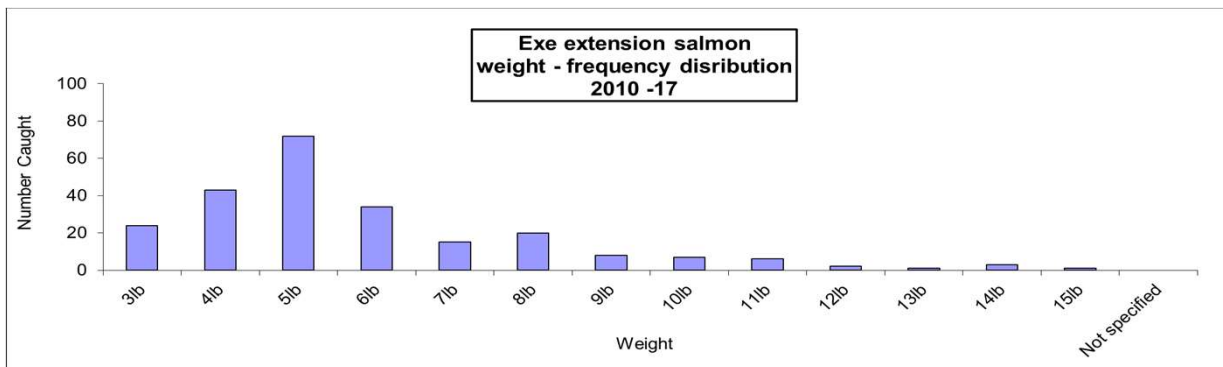




2003 - 17		
Total	Total Grilse (3-9lb)	Total MSW (9lb+)
560	88%	12%

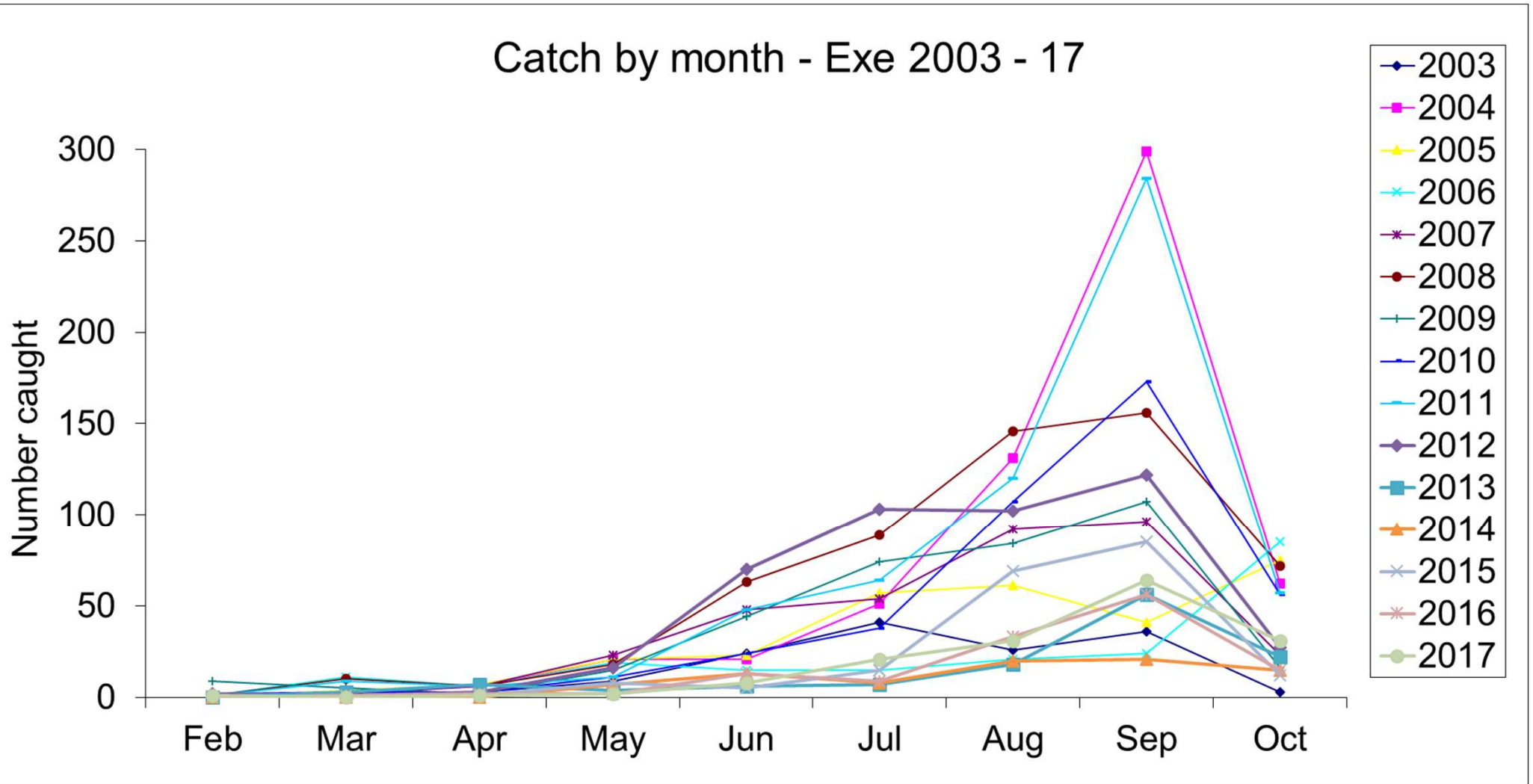


2003 - 09		
Total	Total Grilse (3-9lb)	Total MSW (9lb+)
324	88%	12%

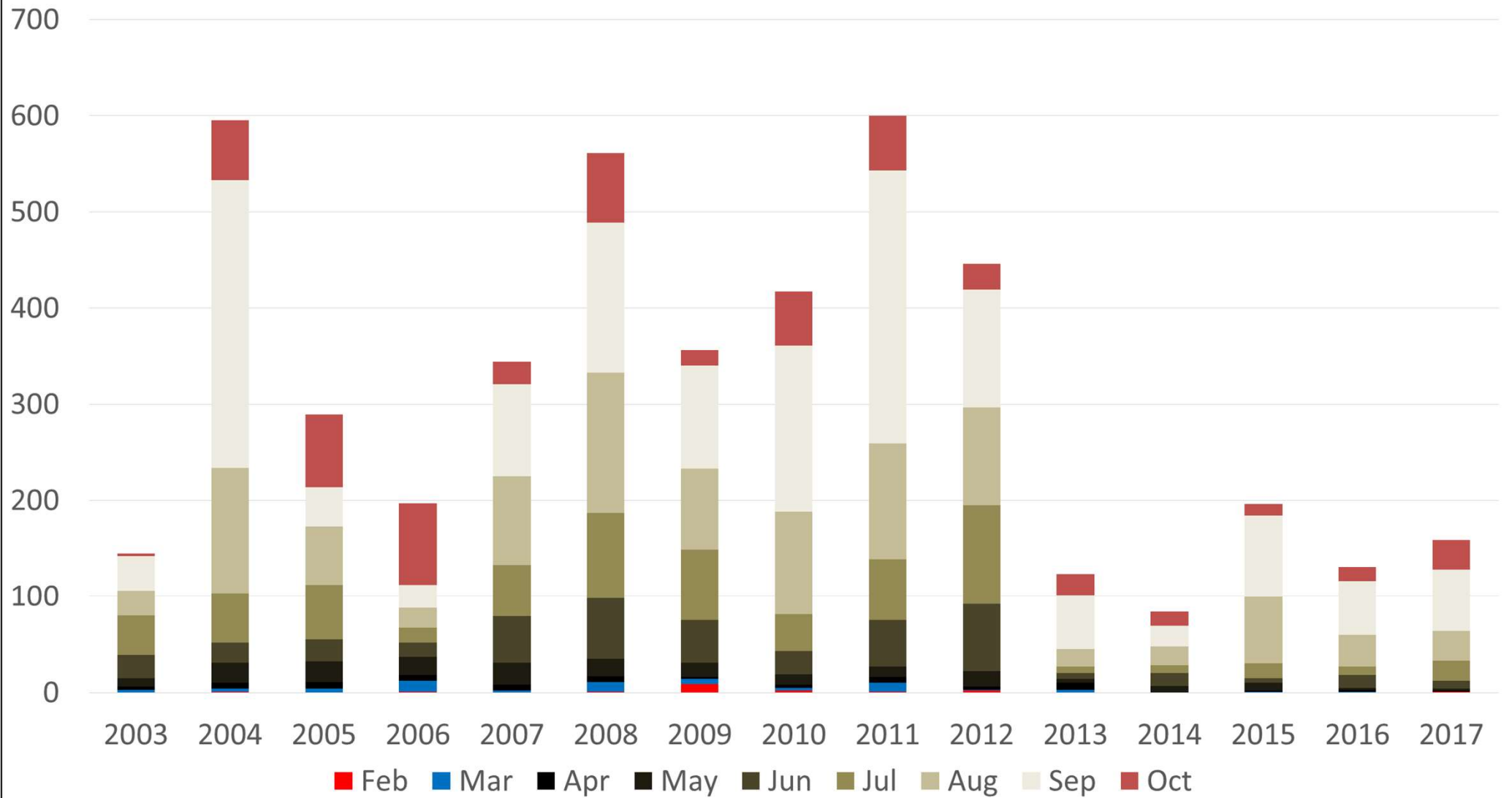


2009 - 17		
Total	Total Grilse (3-9lb)	Total MSW (9lb+)
236	88%	12%

Catch by month - Exe 2003 - 17

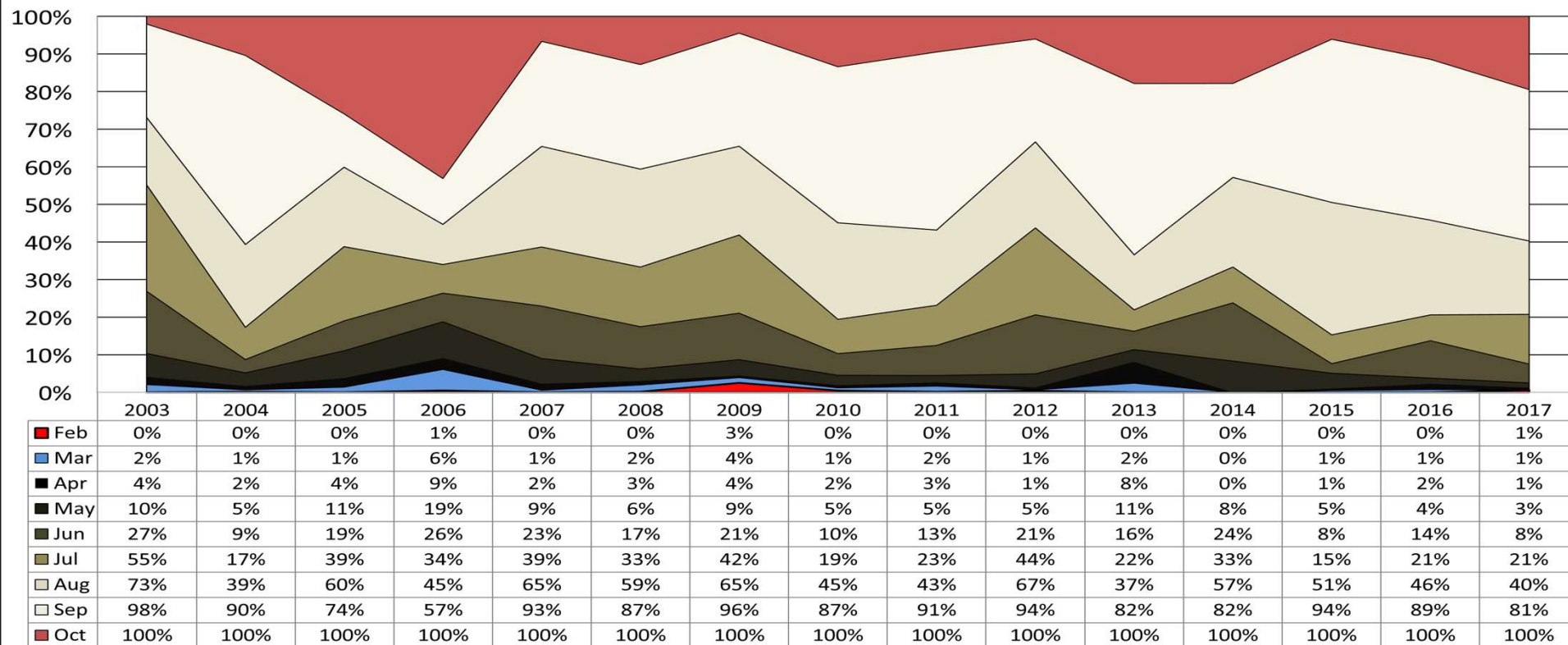


### Exe salmon cumulative rod catch by month





**Exe salmon cumulative rod catch by month, Feb - Oct  
(as % of total declared catch)**

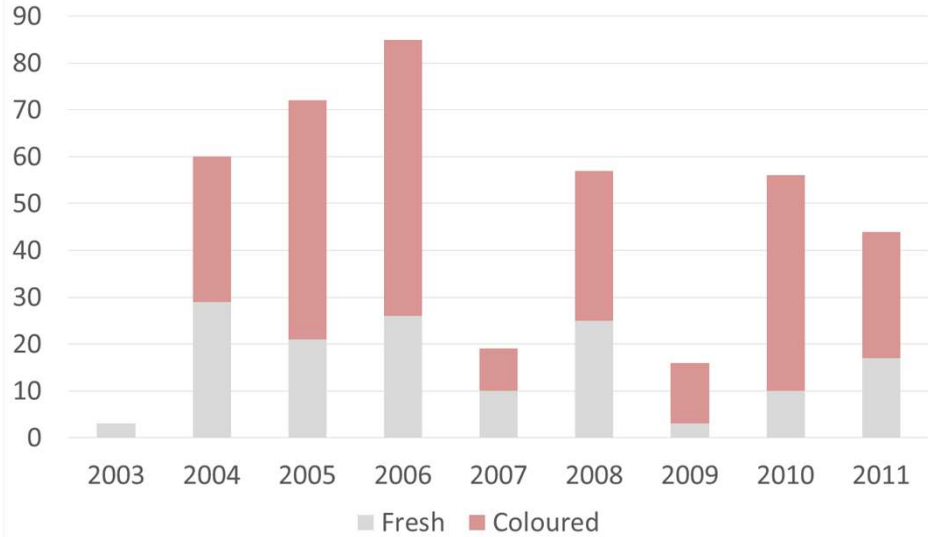


**% of annual rod total caught during the extension**

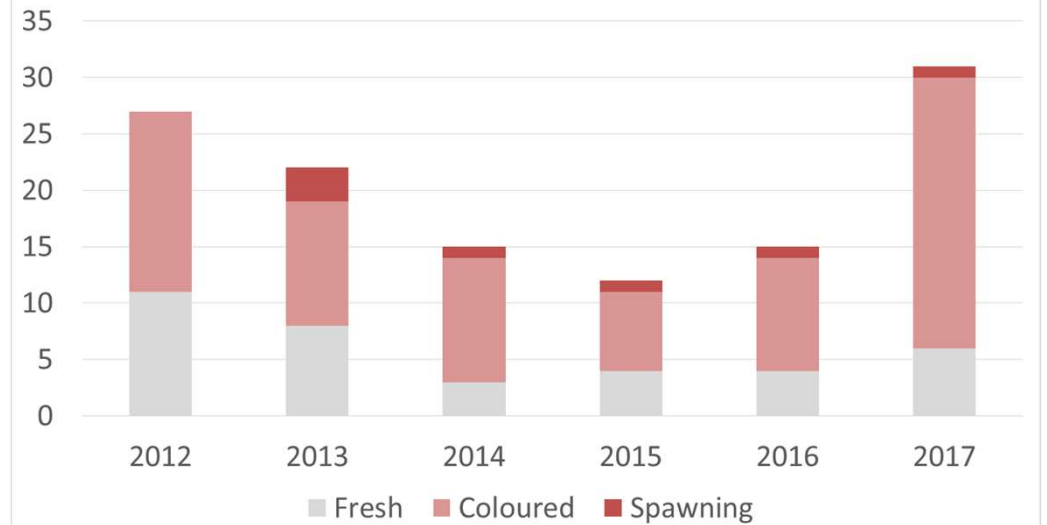
2003	2004	2005	2006	2007	2008	2009	2010	2011	2012	2013	2014	2015	2016	2017
2%	10%	26%	43%	7%	13%	4%	13%	10%	6%	18%	18%	6%	11%	19%



**Condition of Exe extension salmon  
2003 - 11**



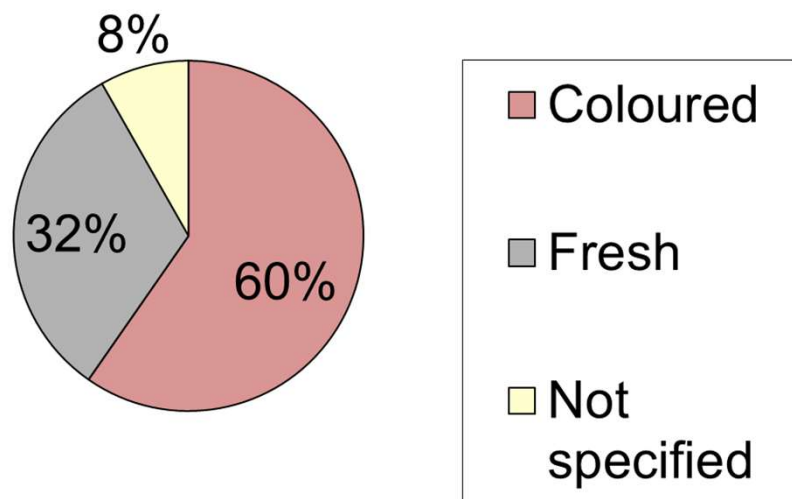
**Condition of Exe extension salmon  
2012 - 17**



	2003	2004	2005	2006	2007	2008	2009	2010	2011	Total
<b>Coloured</b>	0	31	51	59	9	32	13	46	27	268
<b>Fresh</b>	3	29	21	26	10	25	3	10	17	144
<b>Not specified</b>	0	2	3	0	4	15	0	0	13	37
<b>Total (condition declared only)</b>	3	60	72	85	19	57	16	56	44	
<b>% coloured</b>	0	52%	71%	69%	47%	56%	81%	82%	61%	
<b>Mean % coloured</b>	58%									

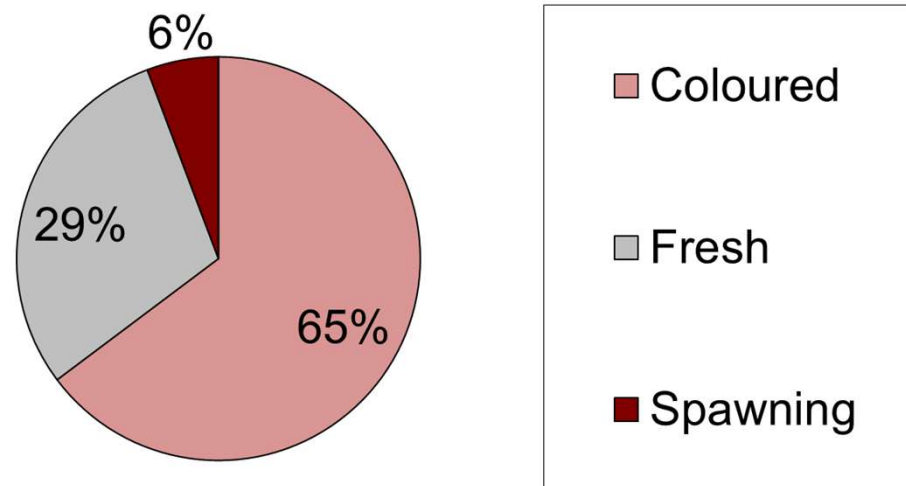
	2012	2013	2014	2015	2016	2017	Total
<b>Coloured</b>	16	11	11	7	10	24	79
<b>Fresh</b>	11	8	3	4	4	6	36
<b>Spawning</b>	0	3	1	1	1	1	7
<b>Total</b>	27	22	15	12	15	31	
<b>% coloured + spawning</b>	59%	64%	80%	67%	73%	81%	
<b>Mean % coloured or spawning</b>	71%						

## Condition of salmon caught in Exe ext. 2003 - 11



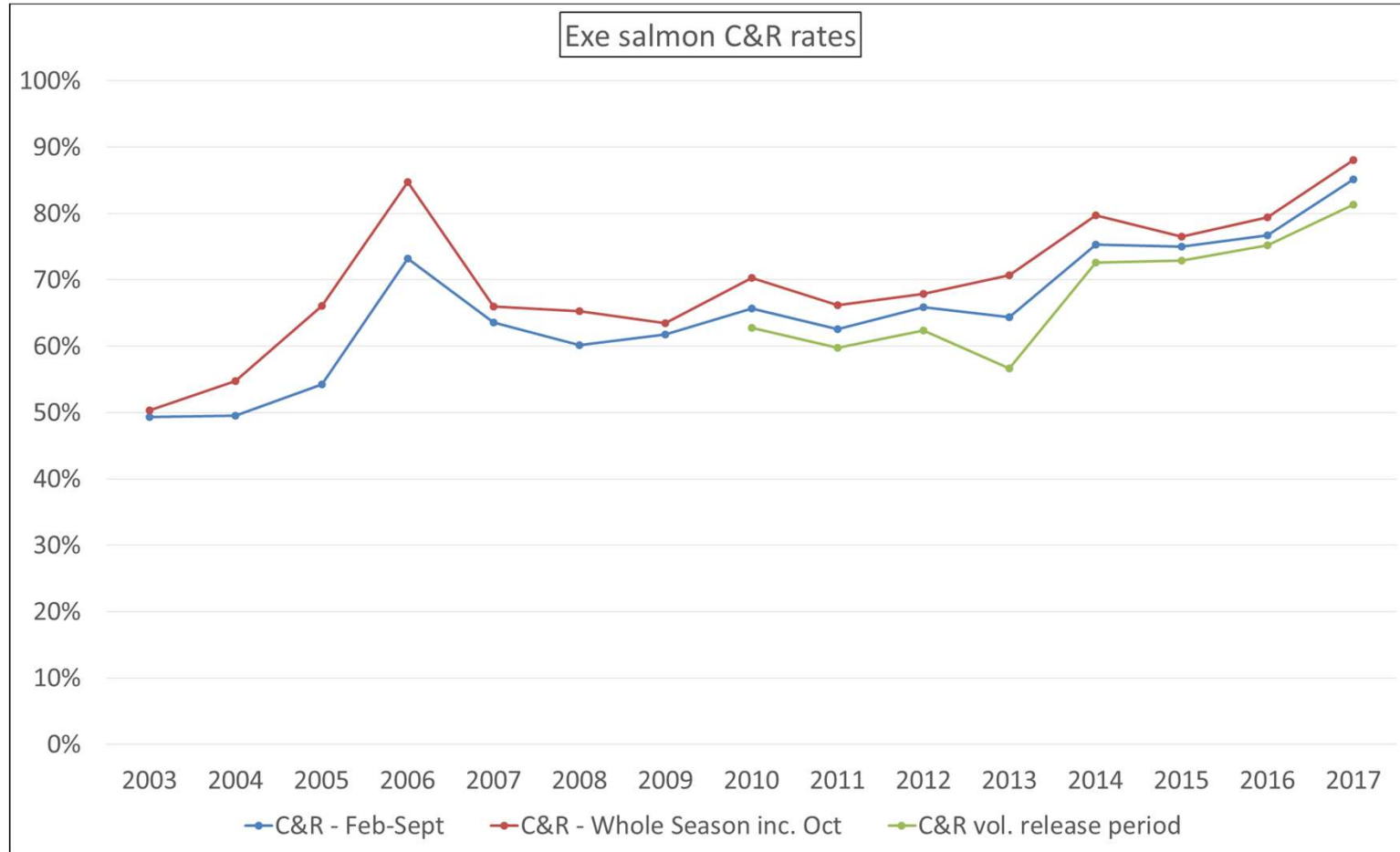
	Total
Coloured	268
Fresh	144
Not specified	37

## Condition of fish caught in Exe ext. 2012 - 17



	Total
Coloured	79
Fresh	36
Spawning	7

	Extension salmon catch by reach					
	Barle	Little Exe	Main river u/s Tiverton	Main river d/s Tiverton	Other	Not specified
2003	0	0	2	1	0	0
2004	27	1	15	14	0	5
2005	8	0	45	16	4	2
2006	9	0	50	24	0	2
2007	0	0	13	9	0	1
2008	26	0	32	8	0	4
2009	1	0	12	3	0	1
2010	21	0	27	7	0	0
2011	23	0	18	10	0	3
2012	13	0	8	8	0	0
2013	6	0	7	9	0	0
2014	2	0	6	7	0	0
2015	2	0	8	2	0	0
2016	4	0	3	7	0	0
2017	23	0	3	2	0	0
	Extension salmon capture by reach					
	Barle	Little Exe	Main river u/s Tiverton	Main river d/s Tiverton	Other	Not specified
Catch/reach - all years	165	1	249	127	4	18
Catch/reach - all years %	29%	0%	44%	23%	1%	3%
Years most prolific	4	0	7	3	0	0



	2003	2004	2005	2006	2007	2008	2009	2010	2011	2012	2013	2014	2015	2016	2017
<b>Whole season</b>	50%	55%	66%	85%	66%	65%	63%	70%	66%	68%	71%	80%	77%	79%	88%
<b>Feb - Sept</b>	49%	50%	54%	73%	64%	60%	62%	66%	63%	66%	64%	75%	75%	77%	85%
<b>16 Jun - Sept</b>	-	-	-	-	-	-	-	63%	60%	62%	57%	73%	73%	75%	81%